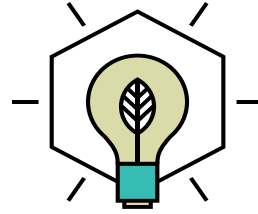


# ACTIVE CHILLED BEAMS

ACB44 (4 WAY)



# BUILT ON INNOVATION



**THE FOUR WAY THROW CASSETTE** ACB44 is designed to provide comfortable draught free room conditions in a compact ceiling cassette module. The cassette is available with both perforated or linear bar faceplates.

## PRODUCT DATA AND PERFORMANCE

**Discharge** ACB44 is a 4 way distribution pattern. Each side features adjustable air direction for comfort and draught control.

**Size** options are available in 2' or 4' cassettes

**Primary Air Flow** the 4' model provides 15-120 CFM and the 2' provides 15-80 CFM

**Cooling** 5,000-7,000 BUTH

**Coil** available in 2 or 4 pipe

## COMMON APPLICATIONS

**The four way throw** is best suited for buildings that are looking to free ceiling space as the ACB44 delivers the performance of a linear active chilled beam in a 2' shorter length, thus requiring up to 50% less ceiling surface space. This is useful for freeing the area for other services such as lights and sensors.





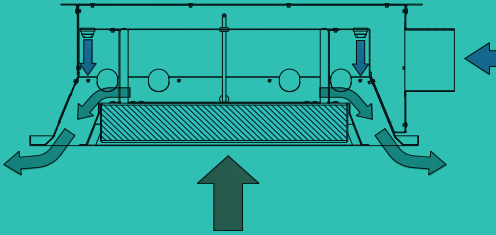
**PERFORMANCE CHARACTERISTICS**

MODEL	SIZE		TYPICAL CAPACITY		Primary Airflow (CFM)	SOUND LEVEL
	Width	Height	Cooling (BTUH)	Heating (BTUH)		
4'	24"	8"	1,000 - 6,000	7,000	15 - 120	NC15-NC30
2'	24"	8"	1,000 - 4,000	5,000	15 - 80	NC15-NC30



**4-WAY THROW-CEILING MOUNTED ACB CASSETTES (HORIZONTAL COILS)**

The ACB44 high-comfort, four-way air discharge ACB unit is designed to fit into a standard 24" T-bar suspended ceiling with similar performance characteristics to a two-way throw linear chilled beam but in a 2' shorter length, reducing the ceiling space requirements. Optional air control blades facilitate the adjustment of the airflow pattern. The ACB44 beam is ideally suited for open plan and cellular office applications.



# ACB44



The Luxton-Reed Center  
47 Westfield Industrial Park Road  
Westfield, Massachusetts 01085

(413) 564-5657  
info@dadanco.com

 Dadanco

 DadancoHVAC

 Dadanco

[WWW.DADANCO.COM](http://WWW.DADANCO.COM)

